

DFN-12 Six Lines EMI Filter Array with TVS Diodes

Description

With demand surging for advanced multimedia capabilities in wireless handsets, designers are facing new challenges. In clamshell and slider phone configurations, the interface signals are typically routed on a flexible printed circuit board that is susceptible to EMI. In addition, as sensor resolution increases, these interfaces operate at higher data rates, and maintaining signal integrity becomes a key requirement.

The UMD6D-100L is an EMI filter array which integrate six Pi-filters (C-R-C) with component values of 10pF-100Ohm-10pF. This device includes ESD protection TVS diodes on every pin, which provide a very high level of protection for sensitive electronic components.

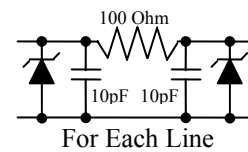
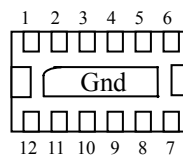
Features

- * Solid-state silicon avalanche technology
- * DFN-12 package
- * Bi-Directional EMI filtering
- * Protects up to six data lines
- * Better than 30dB of attenuation, 800-3000MHz
- * Working voltage: 5V
- * Low pass filter
- * Low leakage current
- * Full RoHS compliance
- * Complies with the following standards:
 /"KGE'83222/6/4"*GUF +Ck/37nx.'Eqpcev': nx
 ""/"KGE'83222/6/6"*GHV+*7I72pu+
 ""/"KGE'83222/6/7"*Uwti g+*': 42 u+

EMI Filter Array TVS



DFN-12 Pin Configuration



<u>Pin</u>	<u>Description</u>
1-6	Input Lines
7-12	Output Lines
Or vice versa	
Center Tab	Ground

Mechanical Characteristics

- * DFN-12 package
- * Available in Lead-Free Pure-Tin Plating
- * Solder Reflow Temp: Pure-Tin (Sn), 260-270°C
- * Consult Factory for Leaded Device Availability
- * Flammability Rating UL 94V-0
- * 8mm Tape and Reel per EIA Standard 481
- * Device Marking: Marking Code,
Pin one defined by DOT

Applications

- * Cellular Handset CCD Camera Lines
- * Clamshell Handset Color LCD Protection
- * Slider Handset Color LCD Protection
- * Digital Camera
- * PDA CCD Camera Lines
- * Microprocessor Based Equipment

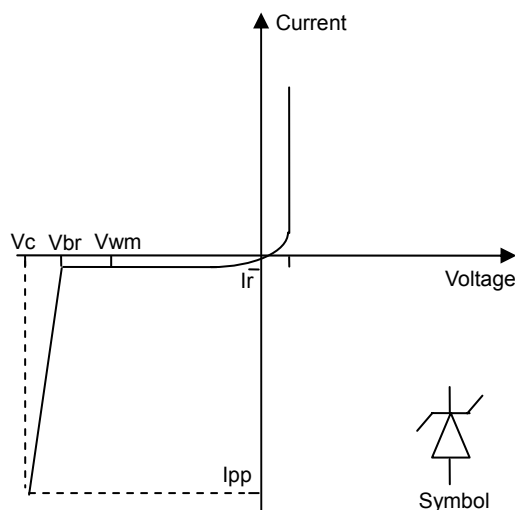
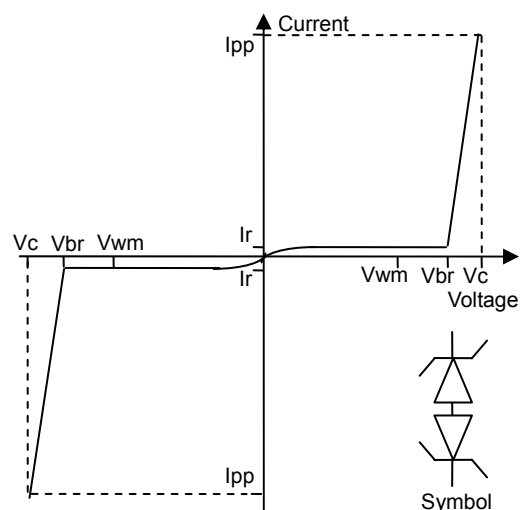
DFN-12 Six Lines EMI Filter Array with TVS Diodes
Absolute Maximum Ratings @ 25°C unless otherwise specified

Parameter	Symbol	Value	Units
DC Power per Resistor	P	100	mW
Operating Temperature	Tj	-40 to 85	°C
Storage Temperature	Tstg	-55 to 150	°C

Electrical Characteristics @ 25°C unless otherwise specified

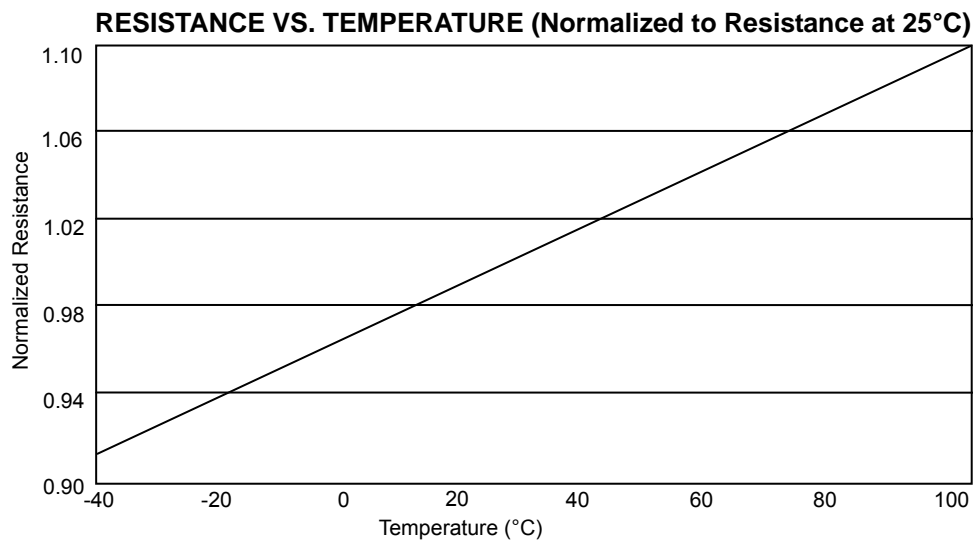
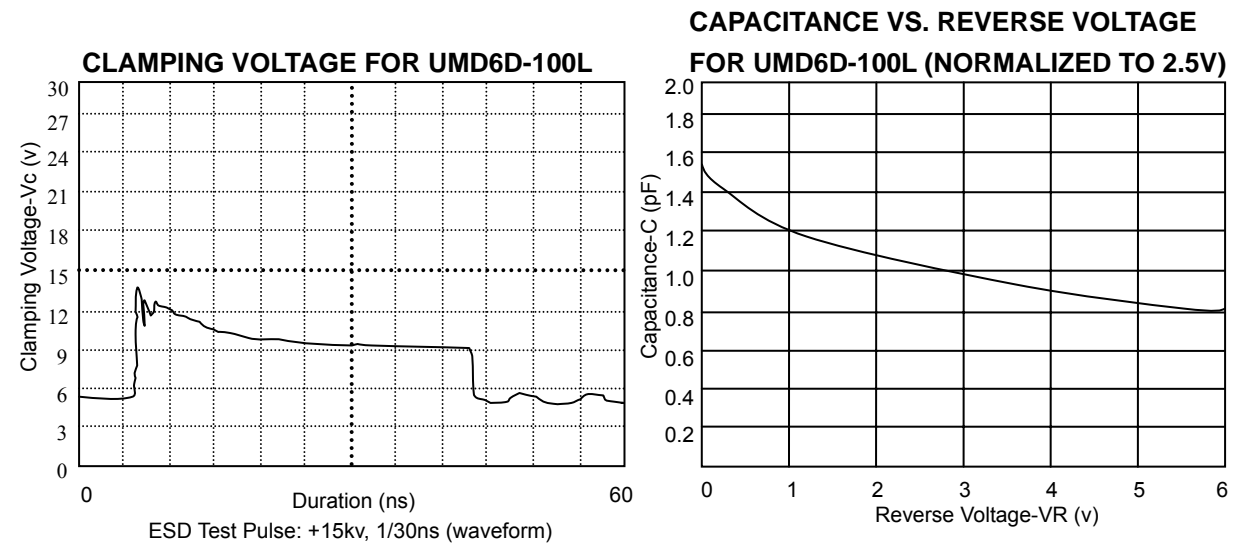
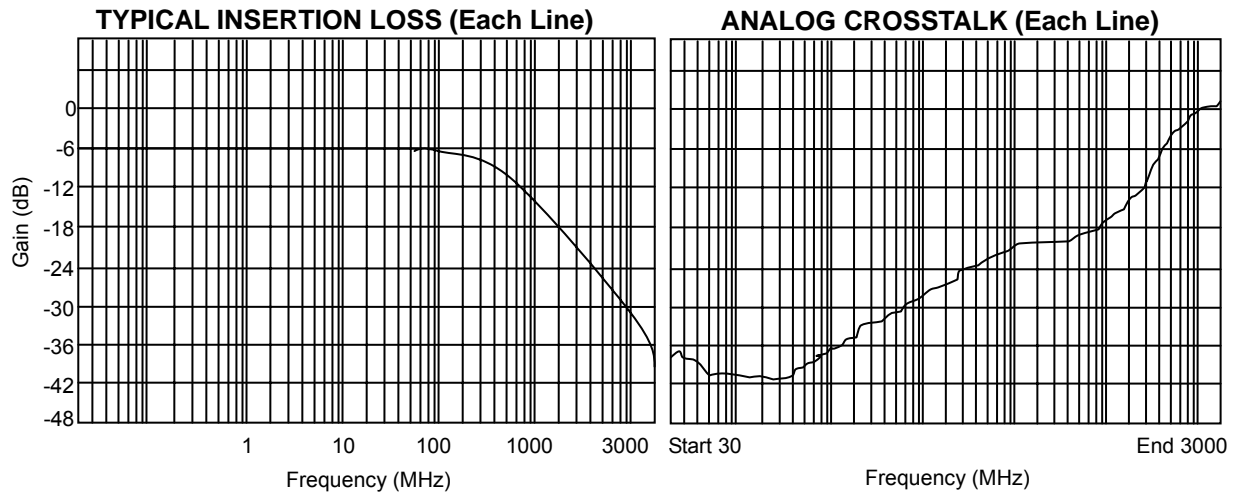
Parameter	Symbol	Conditions	Minimum	Typical	Maximum	Units
Stand-off Voltage	Vwm				5.0	V
Breakdown Voltage	Vbr	It=1mA	6.0	8.0	9.5	V
Leakage Current	Ir	Vwm=3V, T=25°C			0.1	μA
Clamping Voltage	Vc	Notes 1,2,3 and 4		12.0		V
Cut-off Frequency (50ohms I/O)	fc	R=100Ω, C=10pF		150		MHz
Minimum attenuation	<>	800-3000MHz	25			dB
Junction Capacitance	Cj	Vr=0V, f=1MHz		20		pF
Total Resistance	R	Each Line		100		Ohms

Note1: ESD applied to input and output pins with respect to GND, one at a time. Note2: Clamping voltage is measured at the opposite side of the EMI filter to the ESD pin. Note3: Unused pins are left open. Note4: Parameter is subjected to design and characterization.

Uni-Directional Protection

Bi-Directional Protection


DFN-12 Six Lines EMI Filter Array with TVS Diodes

Electrical Characteristics Graphs



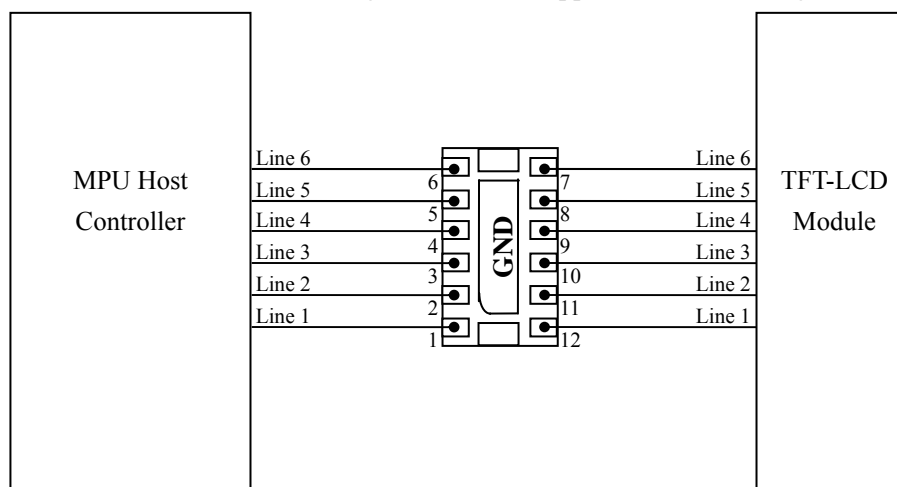
DFN-12 Six Lines EMI Filter Array with TVS Diodes

Applications Information

UMD6D-100L is comprised of six identical circuits each consisting of a low pass filter for EMI/RFI suppression and dual TVS diodes for ESD protection. This device is in a DFN-12 package. Electrical connection is made to the 12 pins located at the bottom of the device. A center tab serves as the ground connection. The device has a flow through design for easy layout.

Majority of color LCD displays are made with Thin Film Transistors (TFT) and as such are very vulnerable to ESD damage. If an ESD stress hits the TFT display, it will produce a black pixel/line. ESD events can also create Electromagnetic Interference (EMI). EMI radiated from an ESD event can couple into a display through cables or I/O ports and become a voltage or current spike. This spike can then corrupt the operation of the sensitive TFT and affect the display operation and quality. Protection is particularly needed for “flip” phones where data lines are susceptible to ESD at the folding joint.

However the UMD6D-100L is not limited to ESD and EMI filtering at data displays, but can be used anywhere space is limited with a number of data lines that that need to be protected. The UMD6D-100L’s size and form factor makes it a good choice for applications with a large number of data lines.



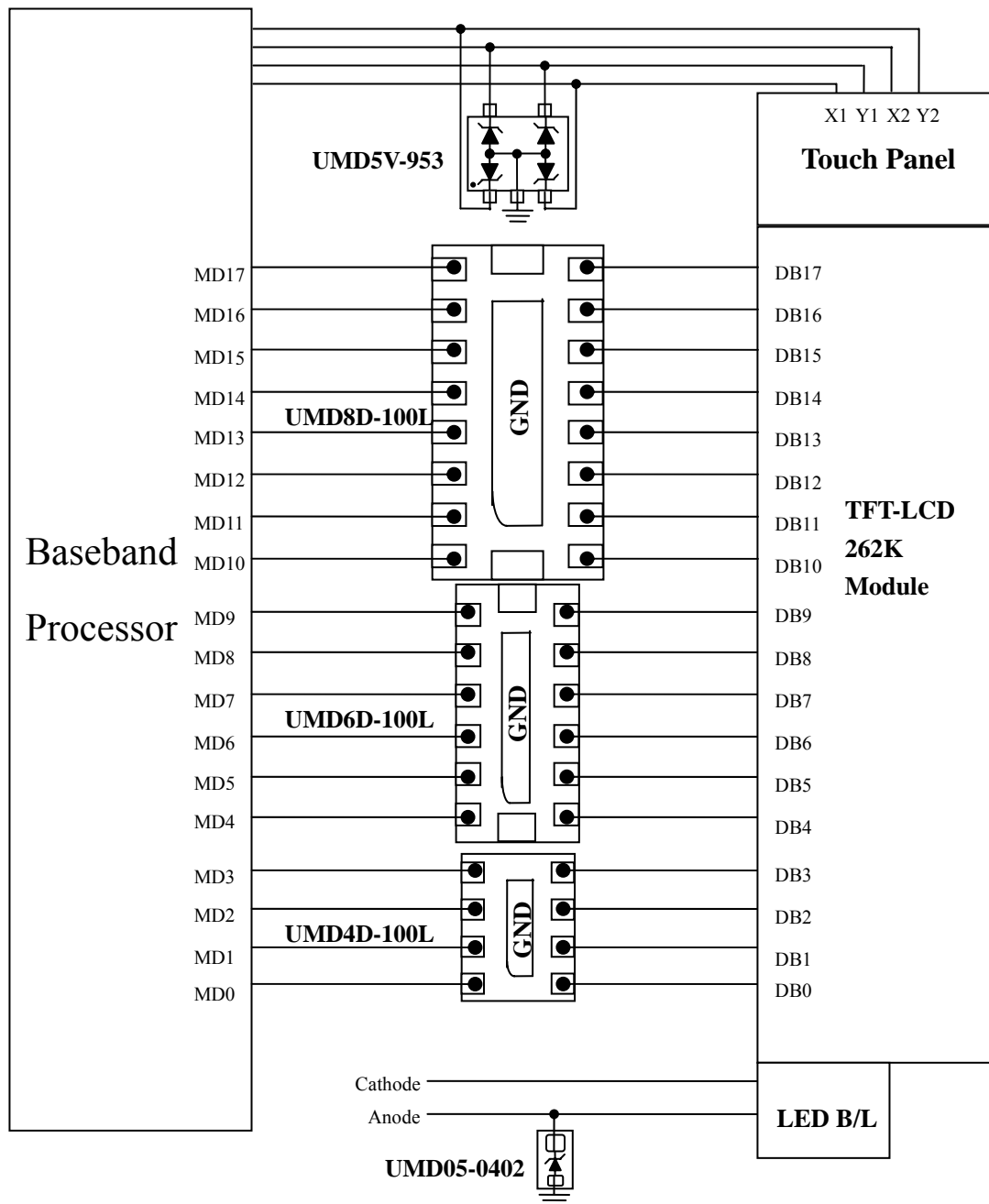
Flow through layout protection

Circuit connectivity is as follows:

- Line 1 is connected to Pin 1 and 12
- Line 2 is connected to Pin 2 and 11
- Line 3 is connected to Pin 3 and 10
- Line 4 is connected to Pin 4 and 9
- Line 5 is connected to Pin 5 and 8
- Line 6 is connected to Pin 6 and 7
- Center tab is connected to ground

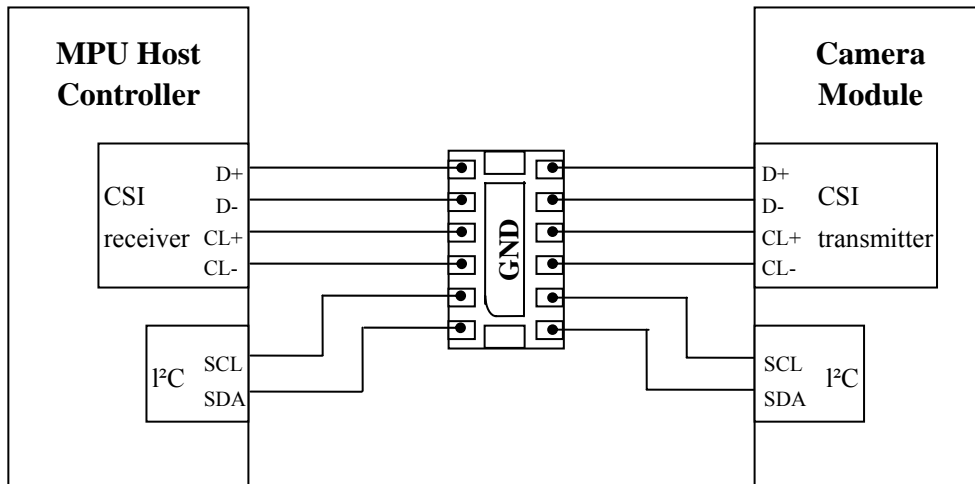
DFN-12 Six Lines EMI Filter Array with TVS Diodes

UMD6D-100L on TFT-LCD Module Application

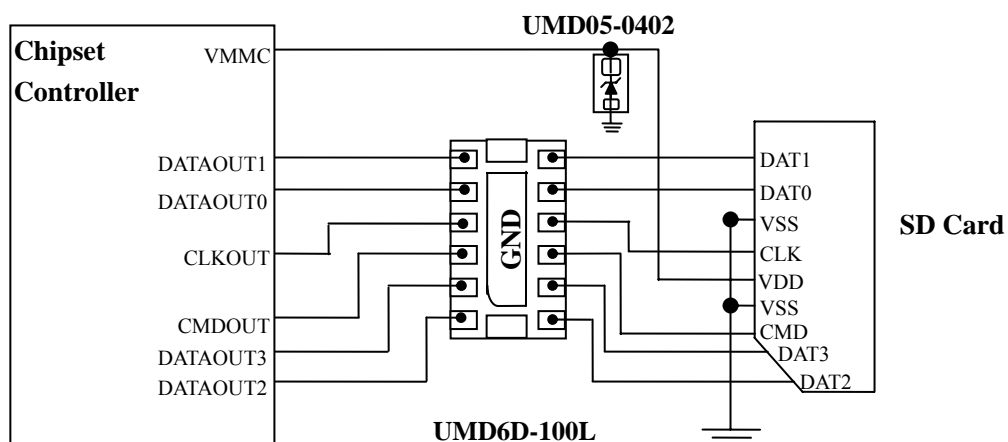
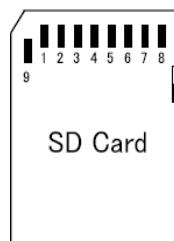


DFN-12 Six Lines EMI Filter Array with TVS Diodes

UMD6D-100L on Camera Module Protection



UMD6D-100L on External Memory Card Protection



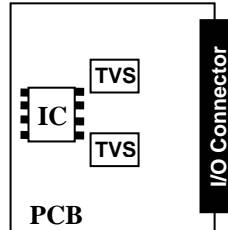
DFN-12 Six Lines EMI Filter Array with TVS Diodes

Circuit Board Layout Recommendations

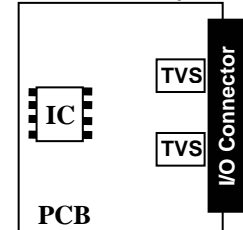
Good circuit board layout is critical for creating an effective surge suppression circuit. The following PCB guidelines are recommended to enhance the performance of a TVS device:

- Place the TVS near the input terminals or connectors to restrict transient coupling.
- Minimize the path length between the TVS and the protected line.
- The ESD transient return path to ground should be kept as short as possible.
- Place a TVS and decoupling capacitor between power and ground of components that may be vulnerable to electrostatic discharges to the ground plane.
- Minimize all conductive loops including power and ground loops.
- Use multilayer boards when possible.
- Minimize interconnecting line lengths.
- Never run critical signals near board edges.
- Fill unused portions of the PCB with ground plane.

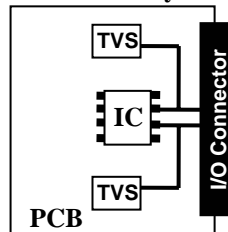
Poor PCB Layout



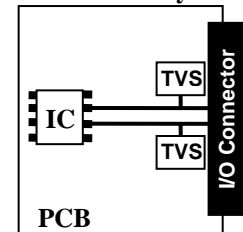
Good PCB Layout



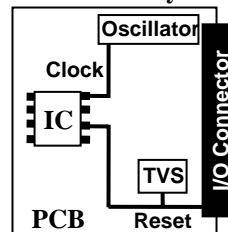
Poor PCB Layout



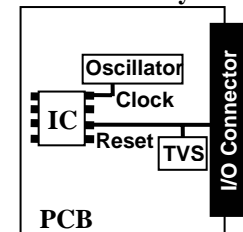
Good PCB Layout



Poor PCB Layout



Good PCB Layout



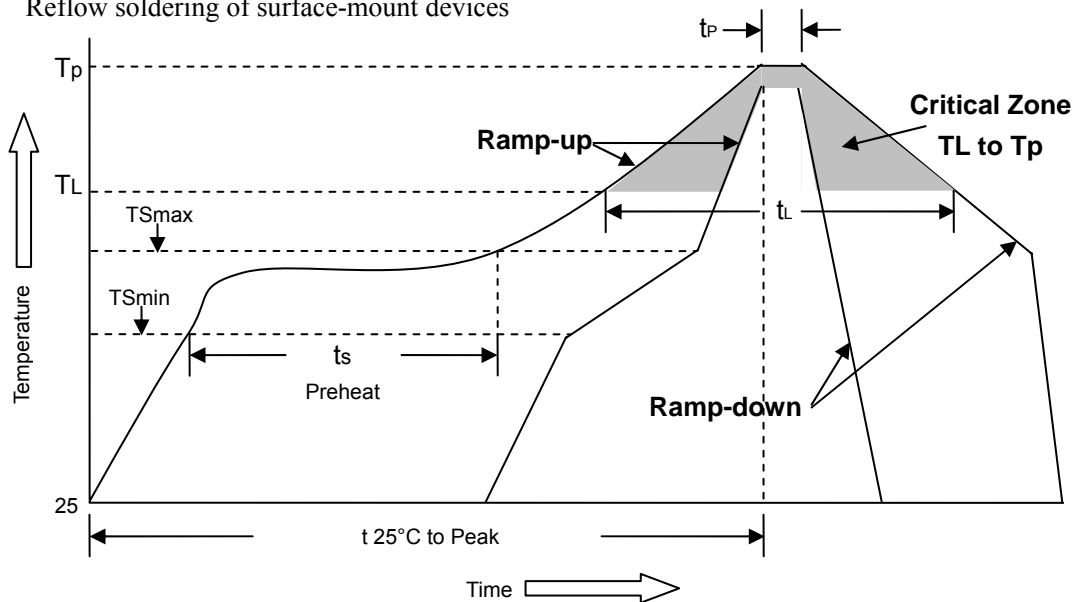
Matte Tin Lead Finish

Matte tin has become the industry standard lead-free replacement for SnPb lead finishes. A matte tin finish is composed of 100% tin solder with large grains. Since the solder volume on the leads is small compared to the solder paste volume that is placed on the land pattern of the PCB, the reflow profile will be determined by the requirements of the solder paste. Therefore, these devices are compatible with both lead-free and SnPb assembly techniques. Unlike other lead-free compositions, matte tin does not have any added alloys that can cause degradation to solder joint.

DFN-12 Six Lines EMI Filter Array with TVS Diodes

Soldering Method for UMD's Products

1. Storage environment: Temperature = 10°C~35°C Humidity = 65%±15%
2. Reflow soldering of surface-mount devices



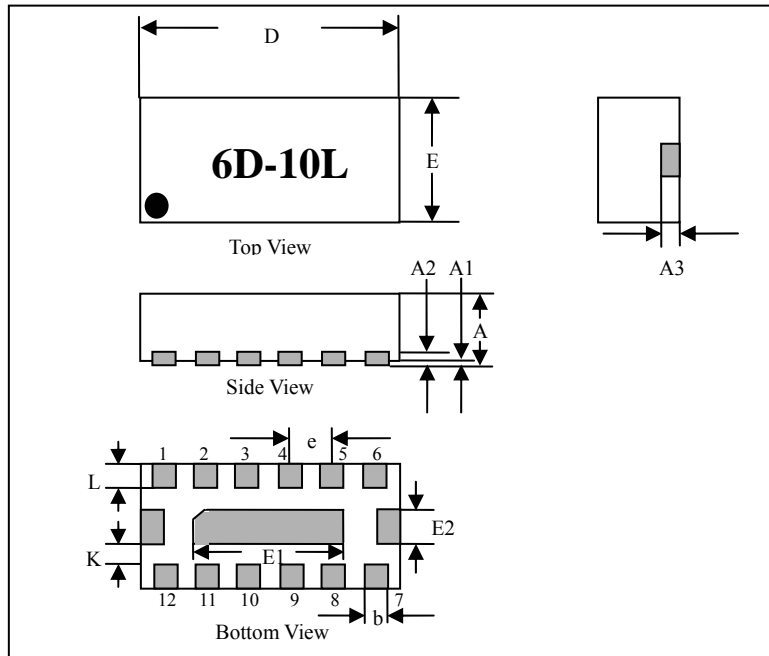
Profile Feature	Pb-Free Assembly
Average ramp-up rate (TL to TP)	<3°C/sec
Preheat	
- Temperature Min (TSmin)	150°C
- Temperature Max (TSmax)	200°C
- Time (min to max) (ts)	60~180sec
TSmax to TL	
- Ramp-up Rate	<3°C/sec
Time maintained above:	
- Temperature (TL)	220°C
- Time (tl)	50~145sec
Peak Temperature (Tp)	260°C +0/-5°C
Time within 5°C of actual Peak Temperature (tp)	20~40sec
Ramp-down Rate	<6°C/sec
Time 25°C to peak Temperature	<8 minutes

Flow (wave) soldering (solder dipping)

Products	Dipping time
Pb devices	5sec±1sec
Pb-Free devices	5sec±1sec

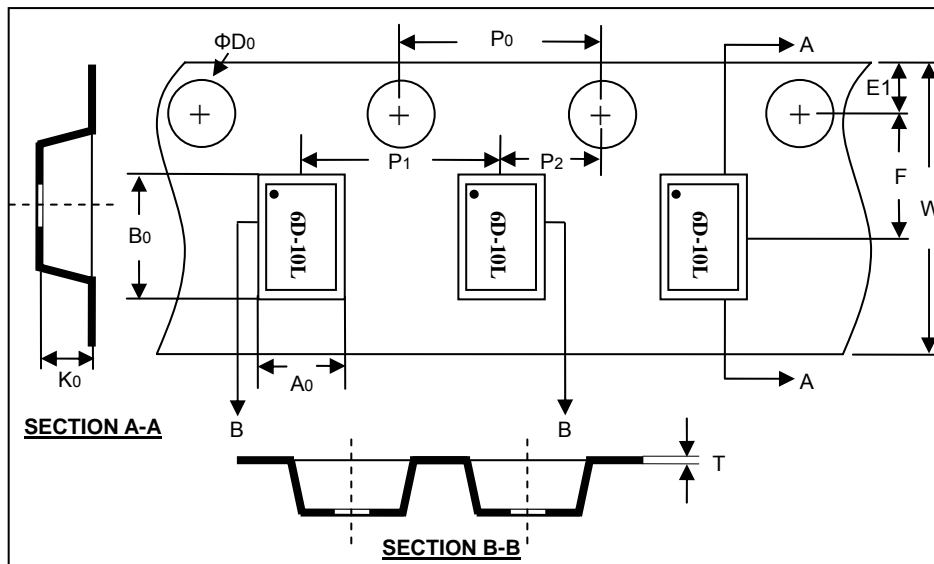
DFN-12 Six Lines EMI Filter Array with TVS Diodes

DFN-12 Dimension Drawing

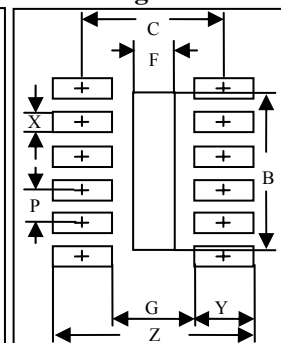


Dim	Dimensions			
	Inches		mm	
	Min	Max	Min	Max
A	0.030	0.033	0.77	0.84
A1	0.000	0.002	0.00	0.05
A2	0.007	0.009	0.18	0.23
A3	0.007	0.009	0.18	0.23
L	0.008	0.011	0.20	0.28
K	0.013	0.016	0.33	0.40
D	0.116	0.122	2.95	3.10
E	0.053	0.057	1.35	1.45
e	0.018	0.022	0.46	0.56
b	0.008	0.012	0.20	0.30
E1	0.082	0.092	2.08	2.34
E2	0.012	0.016	0.30	0.40

DFN-12 Carrier Dimension



Mounting Pattern



Typical		
Di m	MM	Inches
Z	2.15	0.085
C	1.52	0.060
G	0.89	0.035
Y	0.63	0.025
X	0.30	0.012
B	2.30	0.091
P	0.50	0.020
F	0.45	0.018

Dimensions in mm.

Reel Dia.	Tape Width	A0	B0	K0	ΦD0	E1
178mm (7")	8mm	1.60±0.10	3.25±0.10	0.95±0.10	1.50±0.10	1.75±0.10
F	W	P0	P1	P2	T	
3.50±0.05	8.00±0.30	4.00±0.10	4.00±0.10	2.00±0.05	0.20±0.05	

DFN-12 Six Lines EMI Filter Array with TVS Diodes**Marking Code**

Part Number	Device Marking
UMD6D-100L	6D-10L

Ordering Information

Part Number	Lead Finish	Qty Per Reel	Reel Size
UMD6D-100L	Pb-Free	3,000	7 inch

Please Read Carefully

Information in this document is provided solely in connection with UMD products. UMD reserves the right to make changes, corrections, modifications or improvements, to this document, and the products and services described herein at any time, without notice.

All UMD products are sold pursuant to UMD's terms and conditions of sale.

Purchasers are solely responsible for the choice, selection and use of the UMD products and services described herein, and UMD assumes no liability whatsoever relating to the choice, selection or use of the UMD products and services described herein.

No license, express or implied, by estoppels or otherwise, to any intellectual property rights is granted under this document. If any part of this document refers to any third party products or services it shall not be deemed a license grant by UMD for the use of such third party products or services, or any intellectual property contained therein or considered as a warranty covering the use in any manner whatsoever of such third party products or services or any intellectual property contained therein.

Unless otherwise set forth in UMD's Terms and Conditions of sale UMD disclaims any express or implied warranty with respect to the use and/or sale of UMD products including without limitation implied warranties of merchantability, fitness for a particular purpose (and their equivalents under the laws of any jurisdiction), or infringement of any patent, copyright or other intellectual property right.

Unless expressly approved in writing by an authorized UMD representative, UMD products are not recommended, authorized or warranted for use in military, air craft, space, life saving, or life sustaining applications, nor in products or systems where failure or malfunction may result in personal injury, death, or severe property or environmental damage. Resale of UMD products with provisions different from the statements and/or technical features set forth in this document shall immediately void any warranty granted by UMD for the UMD product or service described herein and shall not create or extend in any manner whatsoever, any liability of UMD.

2010 United Micro Device Inc – All rights reserved

www.umdcorp.com